



WATER-COOLED SCREW CHILLERS



AIR-COOLED SCREW CHILLERS

Smart Chiller Solutions.

Made in India,
for a Sustainable India.





Overview

Gurgaon Factory	4
Factory Certification	5
Gurgaon R&D center	6
Gurgaon Factory Milestones	7

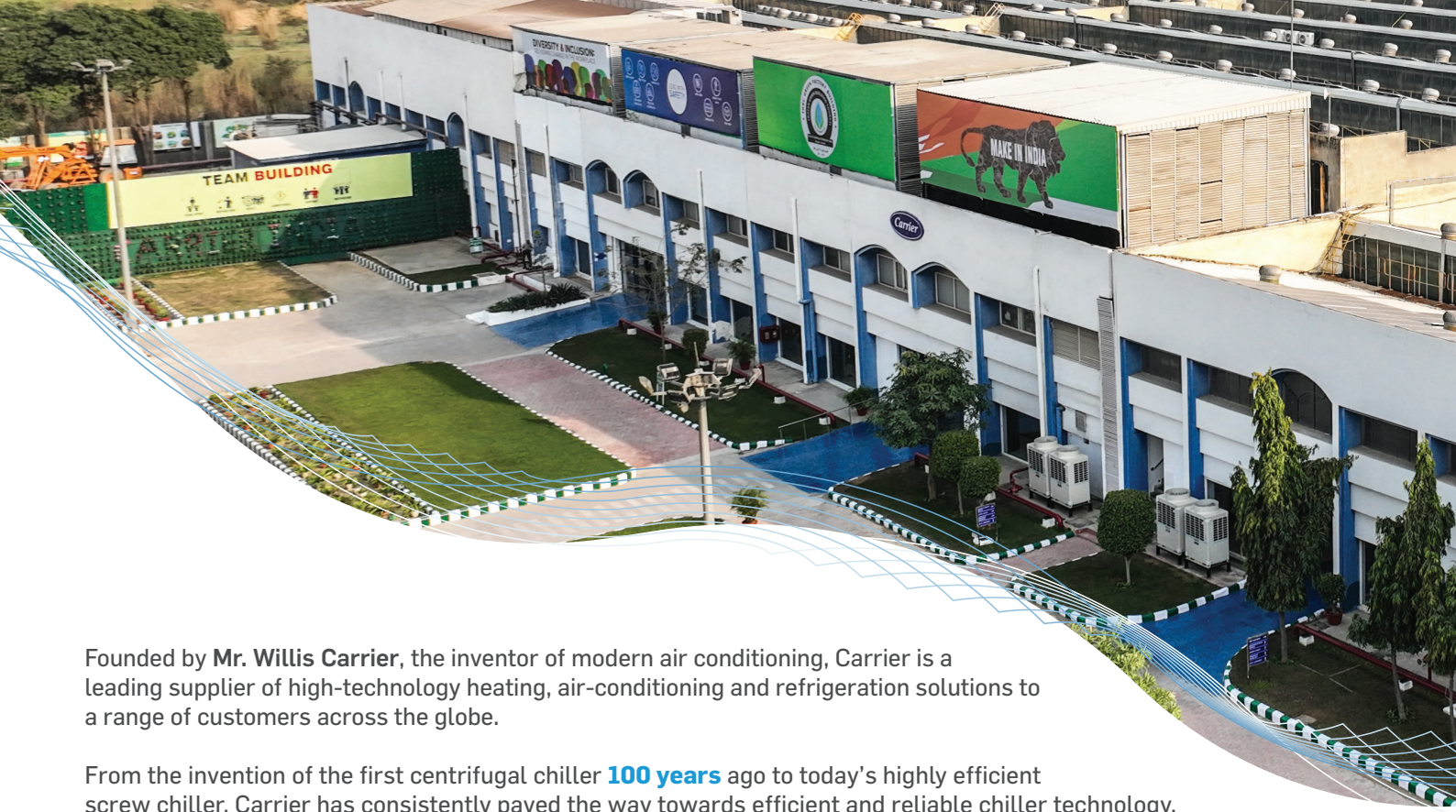
Made-in-India Screw chillers

Air-Cooled Screw Chillers	8
Water-Cooled Screw Chillers	9
Carrier SmartVu™ Control System	10
Service capabilities	11

Technical Specifications

30KA	12
30KAV	13
30XW	14
30XW-V	15





Founded by **Mr. Willis Carrier**, the inventor of modern air conditioning, Carrier is a leading supplier of high-technology heating, air-conditioning and refrigeration solutions to a range of customers across the globe.

From the invention of the first centrifugal chiller **100 years** ago to today's highly efficient screw chiller, Carrier has consistently paved the way towards efficient and reliable chiller technology.

Providing smart and sustainable solutions with Made in India chillers, Carrier's comprehensive range of offerings is suitable for varied customer applications.

MANUFACTURED AT GURGAON FACILITY

WATER-COOLED
SCREW CHILLERS



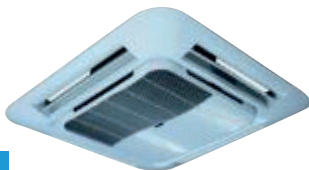
AIR-COOLED
SCREW CHILLERS



DUCTED



CASSETTE



FAN COIL UNITS



FLOOR STANDING UNITS



CARRIER GURGAON MANUFACTURING FACTORY

FACTORY CERTIFICATIONS

Our factory certifications provide the assurance of top-notch quality and reliability, which makes Carrier one of the most sought-after companies in the industry.



GURGAON FACTORY MILESTONES



Manufactured and shipped our **1000th** chiller from Carrier India's Manufacturing Facility in July 2020.



Accredited with
IGBC* Platinum Certification

*Indian Green Building Council

CARRIER ESG GOALS

Our 2030 ESG goals are our commitment to the things that matter, and we are continuously challenging ourselves to think bigger and be better.



Reduce our customers' carbon footprint by more than **1 gigaton**



Achieve carbon-neutral operations



Minimise energy, water and landfill wastage



Establish a responsible supply chain program

CARRIER EXPERT CENTRE (CEC) GURGAON

With a focus on elevating the customer experience, Carrier India inaugurated Carrier Expert Centre, a dedicated and immersive exhibit. Showcasing a wide range of Carrier products, it is our aim to help our customers to dive into the world of latest innovation and legacy at our newly inaugurated centre.





GURGAON R&D CENTRE

Carrier was built on a legacy of innovation, beginning with our founders. We are innovators at heart, and inventors by heritage. From the start, we've pioneered new technologies and enabled the creation of entirely new industries that have changed the world. Today, building on our history of firsts, we're boldly advancing the industries we created to make a difference in people's lives. Backed by a state-of-the-art R&D centre in Gurgaon, our pursuit for excellence revolves around developing products & solutions for all customer verticals.

The facility also houses NABL-certified laboratories, capable of testing Water Cooled Chillers up to 500TR, with VRF systems and DX 1:1 units.



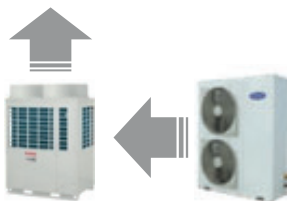
UNIQUE DESIGN FOR SAFETY AND RELIABILITY



Flammable-Gas Detectors
for Enhanced Safety



Automatic Exhaust
Control System



Testing of Horizontal &
Top Discharge Units



Class-1 Fire Resistant
PUF Panels

AIR-COOLED SCREW CHILLERS



30KA - AC Screw Chiller
Cooling capacity: 340~1484 kW

AquaForce® 30KA air-cooled screw chiller is designed from the ground up to meet the efficiency demands of today and the future by providing premium air-cooled chiller packages for contractors, consulting engineers and building owners.



30KAV - AC Screw Chiller with VFD
Cooling capacity: 546~1068 kW

The AquaForce® 30KAV air-cooled VFD screw chiller with Greenspeed® Intelligence is the premium solution for infrastructure applications where installers, consultants and building owners require superior reliability and optimal performances, especially at part



FEATURES



IPLV up to 5.7



Flying Bird
condenser fans



ASME
Stamped HX*



Anti-corrosion*
Coatings



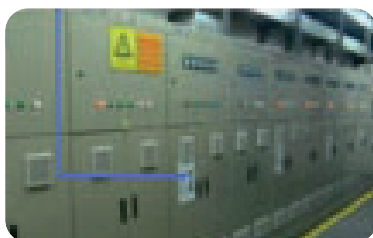
IP54 (Electric Panel)*
Safety

TESTING CAPABILITIES

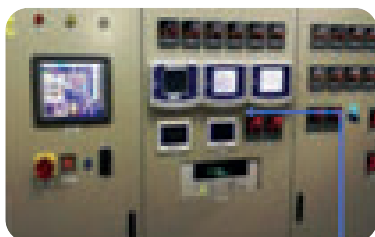
Our focus is to develop next-generation products using the latest technologies and aim to deliver better products that meet the high energy-efficiency standards. With our AHRI-certified performance test lab at Shanghai, we endeavour to provide complete customer satisfaction through remote witness testing in the digital post-pandemic world.



Test Chamber



Power Station



Control Panel



Testing Chiller



WATER-COOLED SCREW CHILLERS



30XW - WC Screw Chiller
Cooling capacity: 250~1487 kW

AquaForce® 30XW water-cooled screw chiller is built for superior reliability & flexibility of operation. Available in 2 efficiency classes, the 30XW is designed to deliver robust performance with low maintenance costs.



30XWV - WC Screw Chiller with VFD
Cooling capacity: 566~1611 kW

AquaForce® 30XWV water-cooled VFD screw chiller with Greenspeed® Intelligence is designed to meet current and future requirements of energy efficiency, versatility and compactness, while delivering on Carrier's commitment towards environmental leadership.



FEATURES



FLCOP up to 6.3
and IPLV up to 10.1



Marine Water
Box*



ASME
Stamped HX*



High pressure
water box*



High Efficiency
Tubes*

TESTING CAPABILITIES

Our continuous efforts to enhance engineering capabilities is of prime focus when it comes to introducing new, high-technology Carrier products in our Gurgaon factory. We endeavour to meet our customers' expectations with our state-of-the-art performance test lab in Gurgaon suited to meet global standards.

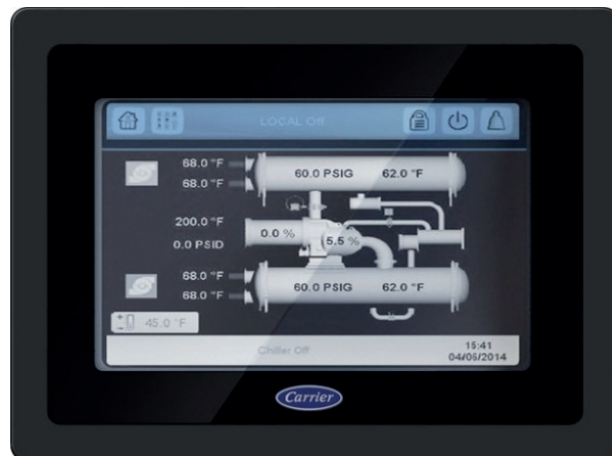


In-house water-cooled chiller
performance test capability
up to 500 TR capacity



CARRIER SMARTVU™ CONTROL SYSTEM

SmartVu™ is an integrated, dynamic and intelligent touch-screen system for enhanced equipment and system management. It is equipped with several features designed to deliver productivity, connectivity and efficiency.



FEATURES



Intuitive
touch-screen interface



Smart data collection
for optimised chiller system



Customisable menu
for different users



DCT for simplified
service operations



Time scheduling for
reduced energy bills

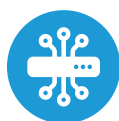


Night mode for
silent operation

INTELLIGENT REMOTE MANAGEMENT



Supports CCN, BACnet IP,
Modbus TCP/IP
and Modbus RTU protocols



Intelligent protocol
module Wi-Fi



Carrier Smart Service
based on
Big Data Processing

SERVICE CAPABILITIES

Get world-class HVAC service and support whenever you need it.

With Carrier, you can count on our expertise and superior service offerings to help you get the most from your HVAC system from start-up to the entire lifecycle.



KEY
HIGHLIGHTS

TECHNICAL SPECIFICATIONS - 30KA

Model	30KA	0351A	0451A	0501A	0550A	0651A	0700A	0750A	0800A	0900A	1000A	1050A	1100A	1250A	1350A	1500A
Nominal cooling capacity*	kW	340	442	487	554	617	661	715	767	882	981	1067	1120	1216	1382	1484
	TR	97	126	139	158	175	188	203	218	251	279	303	318	346	393	422
Compressor	Semi-Hermetic Screw Compressor															
Minimum capacity	%	30%	30%	30%	15%	15%	15%	15%	15%	15%	15%	15%	15%	15%	15%	15%
Refrigerant	R134a															
Control	Carrier® SmartVu™ Intelligent Control System															
Condenser	Cu/Al Heat Exchanger															
Fans	Vlth Generation Flying Bird Axial Fan															
Evaporator	Flooded Multi-Pipe															
Water connection	Victaulic															
Electrical data																
Nominal power supply	V-Ph-Hz	400V-3Ph-50Hz														
Start-up method	Star-Delta Starter															
Dimensions & Weight																
Unit length	mm	3668	3668	3668	4801	4751	6126	6298	6298	7410	8410	8410	8410	9509	10584	10584
Unit width	mm	2253														
Unit height	mm	2379														
Shipping weight	kg	3268	3784	3794	4696	4907	5388	5731	5828	6473	7088	7627	7991	8121	9345	9912
Operating weight	kg	3112	3668	3678	4595	4808	5224	5561	5658	6298	6927	7466	7830	7925	9117	9718

*Nominal Conditions:
Evaporator Entering / Leaving Water Temperature = 54°F / 44°F, Outdoor Air Temperature = 95°F
Evaporator Fouling Factor = 0.0001 (hr-sqft-°F)/BTU

TECHNICAL SPECIFICATIONS - 30KAV

Model	30KAV	0550A	0660A	0700A	0800A	0900A	1000A	1100A
Nominal cooling capacity*	kW	546	665	713	798	888	986	1068
	TR	155	189	203	227	252	280	304
Compressor	VFD Semi-hermetic screw compressor							
Minimum capacity	%	10%	10%	10%	10%	10%	10%	10%
Refrigerant	R134a							
Control	Carrier® SmartVu™ Intelligent Control System							
Condenser	Cu/Al Heat Exchanger							
Fans	Vith Generation Flying Bird Axial Fan							
Evaporator	Flooded Multi-Pipe							
Water connection	Victaulic							
Electrical data								
Nominal power supply	V-Ph-Hz	400V-3Ph-50Hz						
Start-up method	VFD starter							
Dimensions & Weight								
Unit length	mm	5399	6475	6475	7555	7555	8635	8635
Unit width	mm	2253						
Unit height	mm	2379						
Shipping weight	kg	5368	5825	5981	6800	7284	7624	7812
Operating weight	kg	5235	5626	5796	6620	7104	7428	7627

*Nominal Conditions:
Evaporator Entering / Leaving Water Temperature = 54°F / 44°F, Outdoor Air Temperature = 95°F
Evaporator Fouling Factor = 0.0001 (hr-sqft-°F)/BTU

TECHNICAL SPECIFICATIONS - 30XW

Model	30XW	0262	0312	0352	0452P	0552P	0652P	0702P	0903	0912P	1052	1152P	1261P	1401P	1501	1501P
Nominal cooling capacity*	kW	249	304	367	448	571	676	736	858	897	1074	1144	1246	1408	1497	1487
	TR	71	86	104	128	162	192	209	244	255	305	325	354	400	426	423
Compressor	Semi-Hermetic Screw Compressor															
Minimum capacity	%	15%	15%	15%	15%	15%	15%	15%	15%	15%	8%	8%	20%	20%	20%	20%
Refrigerant	R134a															
Controller	Carrier® SmartVu™ Intelligent Control System															
Heat Exchangers	Flooded Multi-Pipe															
Electrical data																
Nominal power supply	V-Ph-Hz	400-3-50														
Start-up method	Star-Delta Starter															
Dimensions & Weight																
Unit length	mm	2742	2742	2742	2763	3055	3080	3286	3080	3142	4029	4694	4515	4515	4488	4515
Unit width	mm	960	960	960	970	1008	1135	1135	1135	1070	1050	1070	1541	1541	1526	1541
Unit height	mm	1568	1568	1568	1696	1743	1950	1949	1900	2062	1845	1998	2614	2614	2563	2614
Shipping weight	kg	2298	2359	2394	2966	3312	4188	4331	3977	4493	5529	6749	8479	8530	8086	8608
Operating weight	kg	2002	2063	2098	2600	3025	3979	4155	3923	4299	5259	6684	8230	8280	7781	8355

*Nominal Conditions:
Evaporator Entering / Leaving Water Temperature = 54°F / 44°F, Condenser Entering / Leaving Water Temperature = 85°F / 94.3°F
Evaporator Fouling Factor = 0.0001 (hr-sqft-°F)/BTU; Condenser Fouling Factor = 0.00025 (hr-sqft-°F)/BTU

TECHNICAL SPECIFICATIONS - 30XW-V

Model	30XW-V	160	180	195	200	235	276	308	315	316	328	338	368	358	366	378	386	408	428	458	500
Nominal cooling capacity*	kW	566	640	714	823	905	964	1074	1040	1066	1146	1190	1232	1252	1238	1336	1326	1435	1495	1611	1772
	TR	161	182	203	234	257	274	305	298	303	326	338	350	356	352	380	377	408	425	458	504
Compressor	Inverter-Driven Semi-Hermetic Twin-Screw Compressor																				
Minimum capacity	%	20%	20%	20%	20%	20%	20%	20%	20%	20%	20%	20%	20%	20%	20%	20%	20%	20%	20%	20%	20%
Refrigerant	R134a																				
Controller	Carrier® SmartVu™ Intelligent Control System																				
Heat Exchangers	Flooded Multi-Pipe																				
Electrical data																					
Nominal power supply	V-Ph -Hz	400-3-50																			
Start-up method	VFD Starter																				
Dimensions & Weight																					
Unit length	mm	3056	3056	3301	3288	3288	3475	4166	3475	3475	4107	4166	4166	4124	3475	4515	4117	4515	4515	4515	4515
Unit width	mm	1137	1137	1223	1215	1215	1461	1396	1461	1461	1526	1405	1405	1541	1461	1541	1487	1541	1541	1541	1551
Unit height	mm	1743	1743	1949	1949	1949	2306	2321	2306	2306	2563	2403	2403	2614	2306	2614	2446	2614	2614	2614	2614
Shipping weight	kg	3348	3371	4368	4386	4392	5528	6578	5677	5677	8033	6752	6752	8270	5736	8640	6305	8751	8751	8847	8847
Operating weight	kg	3061	3084	4192	4210	4216	5305	6384	5461	5461	7769	6606	6606	8083	5552	8469	6214	8628	8628	8724	8724

*Nominal Conditions:
Evaporator Entering / Leaving Water Temperature = 54°F / 44°F, Condenser Entering / Leaving Water Temperature = 85°F / 94.3°F
Evaporator Fouling Factor = 0.0001 (hr-sqft-°F)/BTU; Condenser Fouling Factor = 0.00025 (hr-sqft-°F)/BTU



Is your HVAC system's routine technical inspection due?

Book your appointment now at

1800 3000 3545
1800 1021 421

Or to know more, please connect with us at: expertsupportindia@carrier.com

For more details, please contact our sales office:

Corporate & Registered Office: Carrier Airconditioning & Refrigeration Ltd, Narsingpur,
Kherki Daula Post, Gurgaon-122004, Haryana, India. Tel: 0124-4825500, Fax: 0124-2372230

TOTALINE®

Sales Offices: **Ahmedabad:** 079-44820400, 44820401; **Bangalore:** 080-43442000; **Bhubaneswar:** 9778030033; **Chandigarh:** 0172-5007549/5007550 **Chennai:** 044-66448888; **Cochin:** 0484-4029001; **Delhi/NCR:** 0124-4873200 **Ghaziabad:** 0120-4183260; **Goa:** 9987868667; **Hyderabad:** 040-41812222; **Indore:** 0731-2445200; **Jaipur:** 0141-4921737/738; **Kolkata:** 033-40592000/3000; **Lucknow:** 0522-4158701; **Mumbai:** 022-61700700; **Nagpur:** 9881714903; **Patna:** 7033727687; **Pune:** 020-48571000; **Raipur:** 9752542882; **Surat:** 079-44820400, 079-44820401; **Guwahati:** 9831040088.

CIN: U74999HR1992FLC036104

Website: www.carrierindia.com

E-mail: customersupport@carrier.com



This catalogue provides certain general information and is intended for general guidance only and Carrier is not liable for any damage arising out of the use of the catalogue. The Manufacturer reserves the right to change any product specification without prior notice.

All Proprietary Rights Reserved by Carrier.