




Making Modern Life Possible: The Centrifugal Chiller Turns 100


Dear customers,

Did you know that much of the modern world in which we now live became possible one hundred years ago through the genius of one man... and an amazing invention?

Willis Carrier and His Invention of Centrifugal Chiller Technology

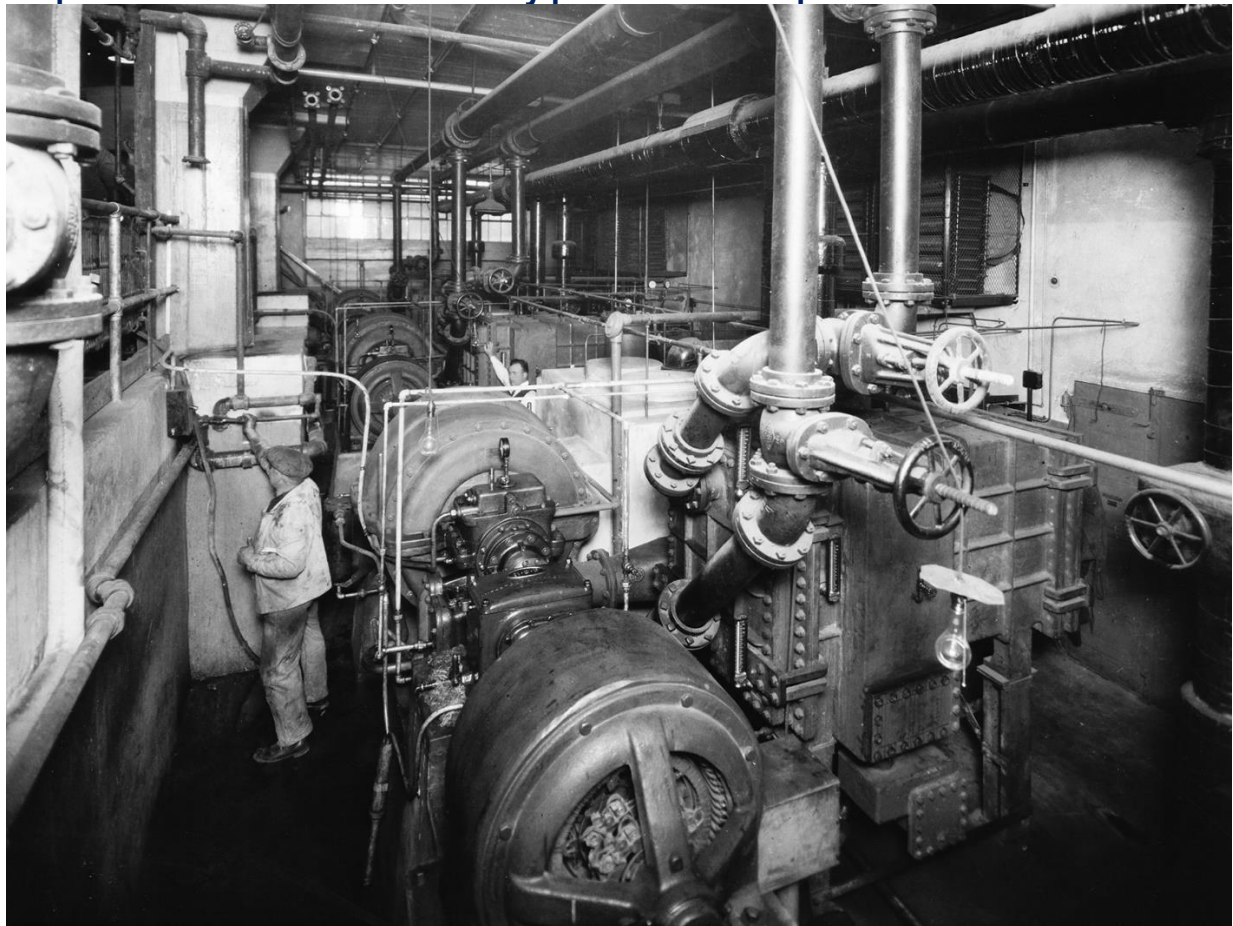


In May 1922, Willis Carrier unveiled his single most influential innovation, the centrifugal refrigeration machine (or "chiller"). Over the next decade, the centrifugal chiller would extend the reach of modern air conditioning from textile mills, candy factories and pharmaceutical labs to the revolutionary work of ensuring human comfort in theaters, stores, offices and homes.



[MORE ABOUT CARRIER & HIS INVENTIONS >](#)

The first customer installation of centrifugal chilling was in 1923, helping to cool Stephen F. Whitman & Sons' candy plant in Philadelphia.



The chiller that had made its debut before a 1922 dinner audience in Newark was placed at Onondaga Pottery Company in Syracuse in 1924. Forty years later, this iconic machine was displayed at the Smithsonian Institution in Washington, D.C., where it resides permanently.

Throughout Carrier's history, documenting technological achievements, significant production milestones and notable global installations were critical components created to keep the company's centrifugal chiller technology in the forefront of global HVAC markets.

**Download our brochure and watch the video
to learn more about
how Carrier's invention of Centrifugal Chiller Technology
making modern life possible.
[Download Brochure](#)**



[Watch Video](#)

Recent Centrifugal Chiller Advancements

It began at the very inception of Willis Carrier's original invention of air conditioning, his vision—and subsequent development of—centrifugal chiller technology for both industrial process cooling as well as 'human comfort.' For the past 100 years, Carrier engineers, scientists and manufacturers around the world have been dedicated to introducing the most advanced and sustainable technologies into the HVAC marketplace. It's our heritage.



The Carrier AquaEdge® 19DV Water-Cooled Centrifugal Chiller is the enabler of intelligent HVAC design. We have developed the 19DV with innovative features, incredible versatility and a full-system approach to efficient cooling and heating. The result is a chiller that's so reliable, so high-performing, so future-proof that once it's installed, you may never have to think about it again. Click [here](#) to get the detailed specification.

Our team of experts are here to improve your current and future energy efficiency. Reach out to us by filling out the form [here](#). We look forward to hearing from you!

[View our Privacy Notice](#)
©2022 Carrier. All Rights Reserved.

The email was sent by: Carrier Hong Kong
Unit 901, 9/F, 8 Lam Chak Street,
Kowloon Bay, Hong Kong

If you prefer to be removed from our mailing list,
please notify us by sending an email to Charmaine.Chi@carrier.com